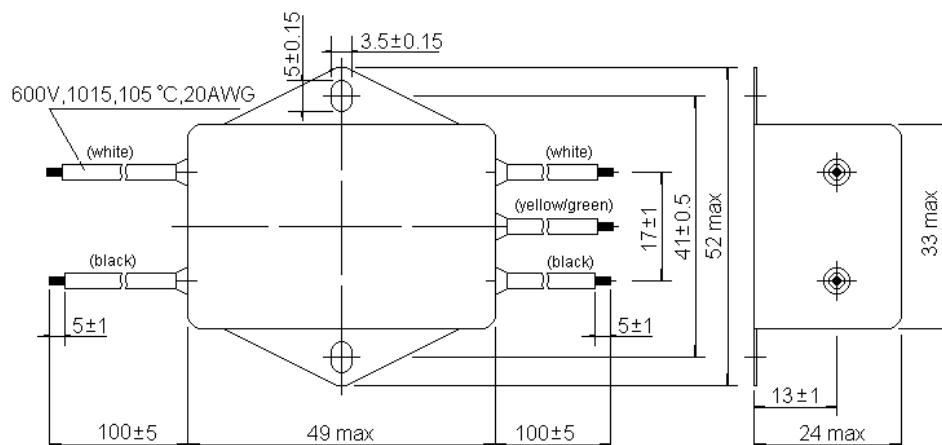


FL1650-1 Specification Direction

1. Outline Drawing and Dimensions: (mm)



2. Specification:

Rated Voltage: 120/250VAC

Rated Current: 6A

Operating frequency: 50/60Hz

Test Voltage: (1min)

(Voltage from 0 with the speed lower than 150V/S raised slowly up to test voltage)

line to ground: 2000VAC

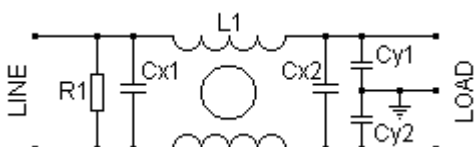
line to line: 1500VDC

Insulation Resistance:

line to ground: $\geq 3000M\Omega$

Leakage Current(250VAC/50Hz): $\leq 0.5mA$

3. Circuit Diagram:



$L1^{+50}_{-30}\%$	Cx1,Cx2	Cy1,Cy2	R1
$2 \times 2.5mH$	0.1uF	2200pF	$1M\Omega$

4. Insertion Loss in dB : (Measured in 50Ω system , as IEC/CISPR NO.17)

